



USER MANUAL

Model

PFD185-75-002BG



Please read the Manual carefully before use. The Manual shall be kept in good custody for later reference

1 SAFETY WARNINGS

1.1 Warning

This appliance is intended for use in household and similar applications, such as staff kitchen areas in shops, offices, and other working environments, farmhouses and by clients in hotels, motels, and other residential-type environments. It is also suitable for bed and breakfast-type environments, catering, and similar non-retail applications.

This appliance is not intended for use by people (including children) with reduced physical, sensory, or mental capabilities, or those lacking experience and knowledge, unless they have been given supervision or instruction concerning the use of the appliance by a person responsible for their safety. Children should be supervised to ensure they do not play with the appliance.

If the supply cord is damaged, it must be replaced by the manufacturer, its service agent, or similarly qualified persons to avoid a hazard.

Do not store explosive substances, such as aerosol cans with a flammable propellant in this appliance.

The appliance must be unplugged after use and before performing user maintenance.

Warning: Keep ventilation openings in the appliance enclosure or in the built-in structure clear of obstruction.

Warning: Do not use mechanical devices or other means to accelerate the defrosting process other than those recommended by the manufacturer.

Warning: Do not damage the refrigerant circuit.

Warning: Do not use electrical appliances inside the food storage compartments of the appliance unless they are of the type recommended by the manufacturer.

Warning: Dispose the refrigerator according to local regulations as it uses flammable blowing gas and refrigerant.

Warning: When positioning the appliance, ensure the supply cord is not trapped or damaged.

Warning: Do not locate multiple portable socket-outlets or portable power supplies at the rear of the appliance.

Do not use extension cords or ungrounded (two-prong) adapters.

Danger: Risk of child entrapment. Before disposing of your old refrigerator or freezer:

- Remove the doors.
- Leave the shelves in place so that children cannot easily climb inside.
- The refrigerator must be disconnected from the electrical supply before installing any accessories.

Refrigerants and cyclopentane foaming material used in the appliance are flammable. Therefore, when the appliance is scrapped, it should be kept away from any fire source and disposed of by a qualified recovery company rather than by combustion, to prevent environmental damage or other harm.

Ensure that keys for doors or lids fitted with locks are kept out of the reach of children and not in the vicinity of the refrigerating appliance, to prevent children from being locked inside.

For EN standard: This appliance can be used by children aged 8 years and above, as well as by people with reduced physical, sensory, or mental capabilities, or those lacking experience and knowledge, provided they have been given supervision or instruction on the safe use of the appliance and understand the associated hazards. Children should not play with the appliance. Cleaning and user maintenance should not be performed by children without supervision. Children aged 3 to 8 years are allowed to load and unload refrigerating appliances.

To avoid contamination of food, please follow these instructions:

- Opening the door for extended periods can significantly increase the temperature inside the appliance compartments.
- Regularly clean surfaces that come into contact with food and accessible drainage systems.
- Clean water tanks if they have not been used for 48 hours. Flush the water system connected to a water supply if water has not been drawn for 5 days.
- Store raw meat and fish in suitable containers in the refrigerator to prevent contact with or drips onto other food.
- Two-star frozen-food compartments are suitable for storing pre-frozen food, making ice cream, and making ice cubes.
- One-star, two-star, three-star, and four-star compartments are not suitable for freezing fresh food.
- If the refrigerating appliance is left empty for long periods, switch it off, defrost, clean, dry, and leave the door open to prevent mold from developing inside.
- For appliances without a 4-star compartment: This refrigerating appliance is not suitable for freezing foodstuffs. (Note 1, 2, 3, 4: Please verify applicability according to your product's compartment type.)
- For a freestanding appliance: This refrigerating appliance is not intended to be used as a built-in appliance. Any replacement or maintenance of the LED lamps should be performed by the manufacturer, its service agent, or a similarly qualified person.



Warning: Risk of fire / flammable materials

1.2 Meaning of safety warning symbols



Prohibition symbol

This is a prohibition symbol.

Failure to comply with instructions marked with this symbol may result in damage to the product or endanger the user's personal safety.



Warning symbol

This is a warning symbol.

It is important to follow the instructions marked with this symbol closely, as failure to do so may result in damage to the product or personal injury.



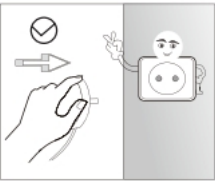
Note symbol

This is a caution symbol.

Instructions marked with this symbol require special attention. Insufficient caution may result in slight or moderate injury, or damage to the product.

This manual contains important safety information that users must observe.

1.3 Electricity related warnings



Do not pull on the power cord to unplug the refrigerator. Firmly grasp the plug and pull it directly from the socket.

To ensure safe use, do not damage the power cord, and do not use it if it is damaged or worn.



Please use a dedicated power socket for the refrigerator; do not share it with other electrical appliances. Ensure the power cord is firmly connected to the socket to prevent the risk of fire.

The power cord must be securely plugged into the socket to prevent the risk of fire.

Please ensure that the grounding electrode of the power socket is properly connected to a reliable grounding line.



In the event of a gas leak or other flammable gases, turn off the gas valve and then open the doors and windows.

Do not unplug the refrigerator or other electrical appliances, as sparks may cause a fire.



Do not use electrical appliances on top of the appliance unless they are of the type recommended by the manufacturer.

1.4 Warnings for using



Do not disassemble or modify the refrigerator or damage the refrigerant circuit. Maintenance should be carried out by a qualified specialist.

If the power cord is damaged, it must be replaced by the manufacturer, its service department, or a qualified professional to avoid potential hazards



The gaps between the refrigerator doors and between the doors and the refrigerator body are small. Be careful not to place your hand in these areas to avoid pinching your fingers. Close the refrigerator door gently to prevent items from falling.



Do not handle food or containers with wet hands in the freezing chamber while the refrigerator is running, especially metal containers, as this can cause frostbite.

Do not allow any child to climb into or onto the refrigerator, as this could result in suffocation or injury from falling.



Do not place heavy objects on top of the refrigerator, as they may fall when the door is opened or closed, potentially causing injuries.

Please Unplug the refrigerator in case of a power failure or while cleaning. Do not reconnect the freezer to the power supply within five minutes to avoid damaging the compressor due to successive starts

1.5 Warnings for placement



Do not store flammable, explosive, volatile, or highly corrosive items in the refrigerator to prevent damage to the product or fire hazards

Do not place flammable items near the refrigerator to avoid the risk of fire.



The refrigerator is intended for household use, such as storing food. It should not be used for other purposes, such as storing blood, drugs, or biological products.



Do not store beer, beverages, or other liquids in bottles or enclosed containers in the freezing chamber of the refrigerator, as they may crack due to freezing and cause damage.

1.6 Warnings for energy

1. Refrigerating appliances may not operate consistently (e.g., defrosting of contents or warming in the frozen food compartment) if used for an extended period at temperatures below the appliance's designed temperature range.
2. Effervescent drinks should not be stored in freezer compartments or low-temperature compartments. Additionally, products such as water ices should not be consumed too cold.
3. Do not exceed the recommended storage times provided by food manufacturers, especially for commercially quick-frozen foods in freezer and frozen-food storage compartments.
4. To prevent an undue rise in the temperature of frozen food while defrosting the appliance, wrap the food in several layers of newspaper.
5. A rise in temperature of the frozen food during manual defrosting, maintenance, or cleaning could shorten its storage life.
6. Opening the door for extended periods can significantly increase the temperature in the appliance compartments.
7. Regularly clean surfaces that come into contact with food and accessible drainage systems.
8. Clean water tanks if they have not been used for 48 hours. Flush the water system connected to a water supply if water has not been drawn for 5 days.
9. Store raw meat and fish in suitable containers in the refrigerator to prevent contact with or drips onto other food.
10. If the appliance is left empty for long periods, switch it off, defrost, clean, dry, and leave the door open to prevent mold development.
11. For appliances with a chill compartment: Some fresh vegetables and fruits are sensitive to cold and are not suitable for storage in this type of compartment.

1.7 Warnings for disposal



The refrigerant and cyclopentane foaming material used in the refrigerator are flammable. Therefore, when disposing of the refrigerator, it should be kept away from any fire sources and handled by a qualified recycling company. It should not be disposed of by combustion to prevent environmental damage or other harm.



When scrapping the refrigerator, disassemble the doors and remove the door gaskets and shelves. Store the doors and shelves in a safe place to prevent any risk of trapping a child.

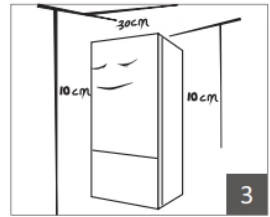
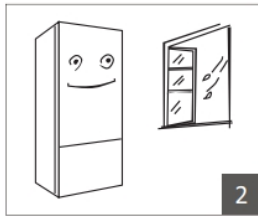
Correct Disposal of This Product:



This marking indicates that the product should not be disposed of with other household waste. To prevent potential harm to the environment or human health from uncontrolled waste disposal, please recycle it responsibly to promote the sustainable reuse of material resources. To return your used device, use the designated return and collection systems or contact the retailer where the product was purchased. They can ensure the product is recycled safely and environmentally.

2 PROPER USES OF REFRIGERATORS

2.1 Placement



1. Before use, remove all packing materials, including bottom cushions, foam pads, and tapes inside the refrigerator. Also, peel off the protective film from the doors and the refrigerator body.

Keep away from heat sources and avoid direct sunlight. Do not place the freezer in moist or damp areas to prevent rust and maintain its insulating effectiveness.

Do not spray or wash the refrigerator and avoid placing it in damp areas where it may be splashed with water. This will help maintain the electrical insulation properties of the appliance.

2. Place the refrigerator in a well-ventilated indoor area. Ensure that the ground is flat and sturdy. If the refrigerator is unstable, adjust the leveling feet by rotating them left or right.
3. Ensure that the space above the refrigerator is greater than 30 cm. The refrigerator should be placed against a wall with a clearance of at least 10 cm to facilitate proper heat dissipation

2.2 Changing the light

Any replacement or maintenance of the LED lamps should be performed by the manufacturer, its service agent, or a similarly qualified professional.

2.3 Starting to use

Before the initial start, allow the refrigerator to stand still for half an hour before connecting it to the power supply.

Before placing any fresh or frozen foods inside, the refrigerator should run for 2-3 hours, or for more than 4 hours during hot summer months when the ambient temperature is high.

Ensure there is enough space for the convenient opening of doors and drawers.

the actual configuration will depend on the physical product or the distributor's specifications.

2.4 Energy saving tips

The appliance should be placed in the coolest area of the room, away from heat-producing appliances or heating ducts, and out of direct sunlight.

Allow hot foods to cool to room temperature before placing them in the appliance. Overloading the appliance causes the compressor to run longer. Foods that freeze too slowly may lose quality or spoil.

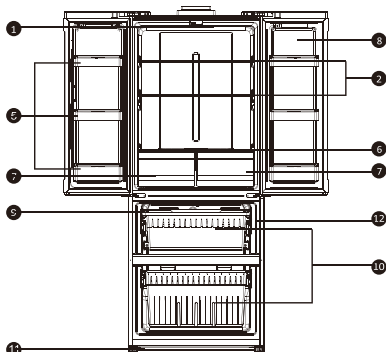
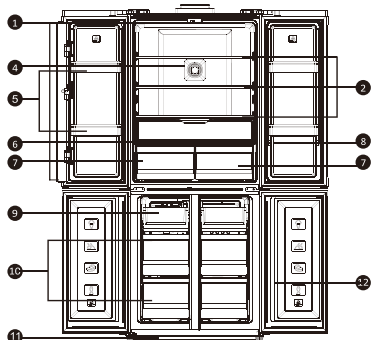
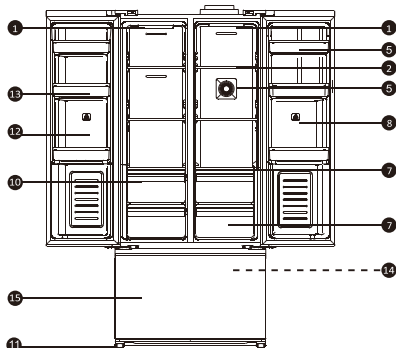
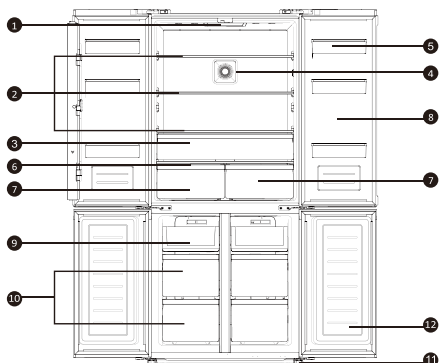
Ensure foods are properly wrapped and containers are dry before placing them in the appliance. This helps reduce frost build-up inside.

Do not line the storage bins with aluminum foil, wax paper, or paper toweling. Liners can interfere with cold air circulation, making the appliance less efficient.

Organize and label food to minimize door openings and reduce search time. Remove as many items as needed in one go and close the door as quickly as possible.

3 STRUCTURE AND FUNCTIONS

3.1 Key components



Important notice:

- 1, The product appearance and specifications may be varied without notice to raise the product quality.
- 2, The product appearance and specifications may be varied with that of the related energy efficiency test or the related safety test, etc.

Fridge Room

- 1 Lamp
- 2 Glass Shelf
- 3 Wide Storage Drawer
- 4 Net Flavour Box
- 5 Refrigerated Door Shelf
- 6 Crisper Box Cover
- 7 Crisper
- 8 Fridge Door

Freezer Room

- 9 Multi-functional pallet
- 10 Freezer Compartment Drawer
- 11 Adjustable Feet
- 12 Freezer Door
- 13 Freezer Door Shelf

Temp. Convertible Zone

- 14 Multi-functional pallet
- 15 Temp. Convertible Zone Drawer

Fridge room

The Refrigerating room is suitable for storage of a variety of fruits, vegetables, beverages and other food consumed in the short term. Cooking foods shall not be put in the refrigerating room until cooled to room temperature.

Foods are recommended to be sealed up before putting into the refrigerator.

The glass shelves can be adjusted up or down for a reasonable amount of storage space and easy use.

Freezer room

The low temperature freezer room may keep food fresh for a long time and it is mainly used to store frozen foods and making ice.

The freezer room is suitable for storage of meat, fish, rice balls and other foods not to be consumed in short term.

Chunks of meat are preferably to be divided into small pieces for quick freezing and easy access.

Please be noted food shall be consumed within the shelf time.

3.2 Functions

Use your appliance according to the following control regulations, your appliance has the corresponding functions as the control panels showed in the pictures below.

OPERATION DISCRIPTION

Keep long press "unlock" button for 3 seconds, then you can press other buttons for operating.

Touch the "room" button, the current room will flash, and then press the "room" button again, you can choose between the fridge rooms and freezer romms. If there is no operation for more than 5S,the default will be confirmed, then the settings take effect.

Touch the "Temperature" button, the temperature of compartment will increase and cycle.

Short press "function" button to select the different mode.

FRIDGE TEMPERATURE SETTING

Press the "room" button, select the fridge compartment, indicator flash;

Each time of press "temperature" key, the temperature rise and cycle as 2 → 3 → ... →

→ 8 → OF → 2 → 3 → ... → 8 → OF,

no operation for 5S, display flash stopped, the settings take effect.

OF means stopping cooling.

FREEZER TEMPERATURE SETTING

Press the "room" button, select the freezer compartment, indicator flash;

Each time of press "temperature" key, the temperature rise and cycle as -25→.....→-16→-

15→-25→.....→-16→-15,no operation for 5S, display flash stopped, the settings take effect.

MODE SETTING

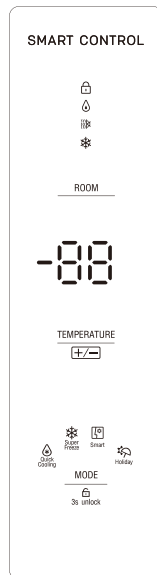
Press the "MODE" button, the current mode will flash; you can choose beteen smart, quick cooling, super freeze, holiday and other four modes by pressing the "MODE" button; If there is no operation for more than 5S,the default will be confirmed, then the settings take effect; when you're setting the temperature , you'll exit this function freeze and the light indicator off.

SMART MODE

The refrigerator will adjust the temperature automatically according to the ambient temperature and the temperature inside the refrigerator, you don't have to choose the temperature by yourself, save your time and effort.

QUICK COOLING MODE

In this mode, the temperature of fridge compartment will reach setted temperature quickly, which will help to keep the food fresh. If you want to put much food in the refrigerator at once, please choose this mode.



SUPER FREEZE MODE

The food will be frozen in a short time. Note: There are two time modes to choose from: 6 hours and 48 hours. When entering the super freeze function normally, it defaults to a 6 hours. If you need to enter the 48 hours super-freezing function you also need to do the following: in the super-freeze function has been effective, and the display board is unlocked, continue to press the "room" button for 5 seconds, enter the set super-freezing time selection, frozen temperature display area display the current freezing time (unit: hours), the remaining icons are not displayed; then press the "MODE" key to set the super-freezing time, set the order of 48 → 6 → 48 ... → 6 cycles; 5 seconds of keyless operation automatically locks to confirm, the setting takes effect, and returns to the normal state. Super Freeze mode takes effect immediately after you have finished setting, and automatically exits and returns to normal control when the super freeze time is set.

HOLIDAY MODE

When you and your family intend to go on holiday, and no one at home, you can choose this mode. The fridge and freezer compartment will automatically match the appropriate temperature in this mode.

Change Fresh Room temperature setting:

Press the "Room Selection" button and select the temperature. The temperature display area displays the original set temperature and flashes at the frequency of 1Hz. Press the "Temperature +/-" button every time, and the Settings will change from -3 to 0 to 4. No button is pressed for 5 seconds or press the "Room Selection" button to enter other room Settings, stop flashing, and the Settings will take effect.

(This function specifies a specific model, the specific object prevail.)



Description: change fresh room temperature range -3~4°C;
Touch "FISH&MEAT", the fresh room temperature is adjusted to "-3°C";
Touch "COLD DRINK", the fresh room temperature is adjusted to "0°C";
Touch the "FRUIT&VEG", the fresh room temperature is adjusted to "4°C".

Temperature display area

FAULT DISPLAY

Fault display shows as following under Fault mode:

ERROR CODE	ERROR TYPE
UC	Communication failure or model mismatch
RS	Sensor failure (refrigerating chamber)
CS	Sensore failure (Drinks box)
FS	Sensor failure (freezing chamber)
Fd	Defrosting sensor failure
FF	Fan failure
ES	Failure of ambient temperature sensor
FH	Defrosting failure

4 MAINTENANCE AND CARE OF THE APPLIANCE

4.1 Overall cleaning

Regular Cleaning: Dust behind the refrigerator and on the floor should be cleaned regularly to improve cooling efficiency and energy savings.

Door Gasket: Check the door gasket regularly to ensure it is free of debris. Clean the gasket with a soft cloth dampened with soapy water or a diluted detergent.

The interior of the refrigerator should be cleaned regularly to avoid odors. Please turn off the power before cleaning the interior.

Remove all food, drinks, shelves, drawers, etc. Use a soft cloth or sponge to clean the inside of the refrigerator with a solution of two tablespoons of baking soda and a quart of warm water. Rinse with water and wipe clean. After cleaning, open the door and let it dry naturally before turning on the power.

For areas that are difficult to clean in the refrigerator (such as narrow spaces, gaps, or corners), it is recommended to wipe them regularly with a soft rag or brush. When necessary, use auxiliary tools (such as thin sticks) to ensure no contaminants or bacterial buildup in these areas.

Do not use soap, detergent, scrub powder, spray cleaner, or other harsh chemicals, as these may cause odors in the refrigerator or contaminate food.

Clean the bottle frame, shelves, and drawers with a soft cloth dampened with soapy water or a diluted detergent. Dry with a soft cloth or allow to dry naturally.

Wipe the outer surface of the refrigerator with a soft cloth dampened with soapy water or detergent, and then wipe dry.

Avoid using hard brushes, steel wool, wire brushes, abrasives (such as toothpaste), organic solvents (such as alcohol, acetone, or banana oil), boiling water, or acidic or alkaline substances, as they may damage the fridge's surface and interior. Boiling water and organic solvents like benzene may deform or damage plastic parts.

Do not rinse directly with water or other liquids during cleaning to avoid short circuits or affecting electrical insulation after immersion.



Please unplug the refrigerator for defrosting and cleaning.



4.2 Defrosting

The refrigerator operates based on the air-cooling principle and features an automatic defrosting function. However, frost that forms due to seasonal changes or temperature fluctuations can also be manually removed by disconnecting the appliance from the power supply or by wiping it with a dry towel.

4.3 Out of operation

Power failure: In the event of a power failure, food inside the appliance can remain preserved for several hours, even in summer. During a power outage, minimize door openings and avoid adding fresh food to the appliance.

Long-time nonuse: If the appliance will not be used for an extended period, unplug it and clean it thoroughly. Leave the doors open to prevent odors.

Moving: Before moving the refrigerator, remove all items inside, secure the glass shelves, vegetable drawers, and freezer drawers with tape, and tighten the leveling feet. Close the doors and secure them with tape.

During transportation, avoid laying the appliance on its side or back, and prevent excessive vibrations. The appliance should be tilted no more than 45 degrees during movement.

 The appliance shall run continuously once it is started. Generally, the operation of the appliance should not be interrupted; otherwise, the service life may be impaired.

5 TROUBLE SHOOTING

You may try to solve the following simple problems on your own. If you are unable to resolve them, please contact the after-sales department.

Appliance is not working correctly	<p>Check whether the power cord is plugged into the power outlet properly. Ensure the connection is secure.</p> <p>Check the fuse or circuit of your power supply. Replace them if necessary.</p> <p>Verify the ambient temperature. If it is too low, try setting the chamber temperature to a colder level.</p> <p>Understand normal operational behavior: It is normal for the freezer not to operate during the automatic defrost cycle or for a short time after the appliance is switched on, as this helps protect the compressor</p>
Odors from the compartments	<p>The interior may need to be cleaned, as some food, containers, or wrappings can cause odors.</p>
Noise from the appliance	<p>The following sounds are quite normal:</p> <p>Compressor running noises.</p> <p>Air movement noise from the small fan motor in the freezer compartment or other compartments.</p> <p>Gurgling sound similar to boiling water.</p> <p>Popping noise during automatic defrosting.</p> <p>Clicking noise before the compressor starts.</p> <p>Unusual noises may be caused by the following issues and may require your attention:</p> <p>The cabinet is not level.</p> <p>The back of the appliance touches the wall.</p> <ul style="list-style-type: none"> · Bottles or containers have fallen.
The compressor runs continuously	<p>It is normal to frequently hear the sound of the compressor. It will need to run more under the following circumstances:</p> <p>The temperature setting is set colder than necessary.</p> <p>A large quantity of warm food has recently been stored in the appliance.</p> <p>The temperature outside the appliance is too high.</p> <p>The doors are kept open too long or too often.</p> <p>The appliance has just been installed or has been switched off for a long time.</p>
A layer of frost occurs in the compartment	<p>Check that the air outlets are not blocked by food and ensure that food is placed within the appliance to allow for sufficient ventilation. Make sure the door is fully closed. To remove frost, please refer to the "Cleaning and Care" chapter.</p>
Temperature inside is too warm	<p>You may have left the doors open too long or too frequently, or an obstacle might be keeping the doors open. Additionally, the appliance may be located with insufficient clearance on the sides, back, or top.</p>
Temperature inside is too cold	<p>Increase the temperature by referring to the "Display Controls" chapter.</p>
Doors can't be closed easily	<p>Check whether the top of the refrigerator is tilted back by 10–15 mm to allow the doors to close automatically and ensure nothing inside is obstructing the doors from closing properly.</p>
Water drips on the floor	<p>The water pan (located at the rear bottom of the cabinet) may not be properly leveled, or the draining spout (located underneath the top of the compressor compartment) may not be correctly positioned to direct water into the pan, or the spout may be blocked. You may need to pull the refrigerator away from the wall to check the pan and spout.</p>
The light is not working	<p>The LED light may be damaged.</p> <p>The control system may have disabled the lights due to the door being kept open too long. Close and reopen the door to reactivate the lights.</p>

Table 1 Climate classes

Class	Symbol	Ambient temperature range
Extended temperate	SN	+ 10 to + 32
Temperate	N	+ 16 to + 32
Subtropical	ST	+ 16 to + 38
Tropical	T	+ 16 to + 43

Dear customer

1. If you wish to return or replace the product, please contact the store where you made the purchase. (Remember to bring the purchase invoice.
2. If your product needs repair, please contact our after-sales service provider.

Telephone: +355 69 209 2571

Email address: support@hagenhometech.com